



ASPENGROVE
SCHOOL

STUDENT/PARENT HANDBOOK 2025-2026



It is with great excitement that we welcome you to another year of learning, growth, and community at Aspengrove School. The year ahead promises to be one of innovation, achievement, and opportunity—both in and out of the classroom. From new academic initiatives to expanded co-curricular programs in athletics, arts, and leadership, our focus remains on ensuring that every student is challenged to achieve their personal best, is meaningfully engaged in their learning, and feels a strong sense of belonging within our school community.

This Student–Parent Handbook has been created to help students and families understand the expectations, routines, and resources that support a safe, respectful, and thriving learning environment. It serves as both a guide and a reference—outlining school policies, procedures, and standards, as well as the values and principles that define “The Aspengrove Way.” We encourage families to review it together and use it throughout the year as a touchstone for understanding how we work together in partnership to support student success.

As we embark on this new school year, we look forward to the moments that will challenge us, inspire us, and bring us closer together as a community. Let us make 2025/26 a year of purposeful learning, memorable experiences, and shared achievement.

Yours in learning,

Gary Kern

**An electronic version of this handbook will always be available through the school website. After reading this handbook, please sign the Parent/Student Handbook agreement through your MySchool account. Thank you!*

TABLE OF CONTENTS

Strategic Plan	4
Who to Contact	5
Governing Body of Aspengrove School	7
Board of Governors	8
School Administrative Structure	9
School Administrative Divisions	9
Communication at Aspengrove	10
Communication Between School & Home	10
Parent/Student - Teacher Communication Model & Protocol	11
Aspengrove Uniforms	11
Free Dress Day	12
Out-Of-Uniform Events	12
Uniform Orders	12
Daily Operations	13
School Operating Hours	13
Attendance	14
Late Arrival & Absence	14
Family Holidays/Extended Absence Outside Holidays	14
Traffic & Parking	15
Student Drivers	17
Locker Usage	17
School Supplies	17

Textbook/Novel Allocation	18
Telephone Privileges	18
Student Cell Phones & Other Electronic Devices	18
Out of School Care Program	19
Academic & Co-Curricular Programmes	20
International Baccalaureate (<i>IB</i>)	21
Primary Years Programme (<i>PYP</i>)	21
Middle Years Programme (<i>MYP</i>)	22
Advanced Placement Programme (<i>AP</i>)	24
International Baccalaureate Learner Profile	25
Academic Expectations	27
Student Resource Centre	28
Technology In The Learning Environment	28
Homework	29
Student Reports	30
Aspengrove School Course Challenge	30
Fine Arts & Athletics	32
RAVENS Outdoor Education Program	32
Co-Curriculars Programme (Grades K - 12)	33
House System	34
Grade 12 Awards	35
Allergies or Other Medical Conditions	36
Food Policy	36
Emergency Procedures	37
School Closure	37
In The Event of a Major Disaster	37
Personal Information Privacy Policy	38
Medications at School	39
Code Of Conduct & School Policies	40
Definitions	45
Resources	47

STRATEGIC PLAN

FUTURE STEPS 2025-2026

It is time to grow our school. Grow our programs. Grow our experiences. Grow our impact. It is our mission to ensure that our students are prepared to be resilient, confident, caring and impactful leaders in an increasingly complex and uncertain world. Click here to read through our [Future Steps Brochure](#).

THE INTERNATIONAL BACCALAUREATE MISSION STATEMENT

The International Baccalaureate Programme aims to develop inquiring, knowledgeable, and caring young people who help to create a better and more peaceful world through intercultural understanding and respect.



WHO TO CONTACT

EMAIL FOR ASPENGROVE STAFF

Type first initial of first name, plus full last name@aspengroveschool.com

Ex. Jane Doe's email is jdoe@aspengroveschool.com

General Inquiries, School

Casey McNamara - Front Desk Administrator

Out of School Care, Camps, Rentals

Alison Strobl - Director of External Programs

Junior School Inquires

Susan Riordan - Junior School Principal & PYP Coordinator

Middle School (Grade 6-7) & Senior School (Grade 8-12)

Rob Ohly - Middle & Senior School Principal

Student Life Inquiries

Andrea Wyness - Director of Student Engagement, K-12

Advancement & Admissions

Nicole Carpenter - Director of Advancement & Enrollment

Jodine Buydens - Admissions Associate

General Financial Inquiries & Accounting

Catalin Albu - Chief Financial & Operations Officer

Karen Webber - Financial Controller

Liz Simard - Accounts Payable & Payroll Administrator and HR support

Board Questions

Gabriela Lomas - Board Secretary

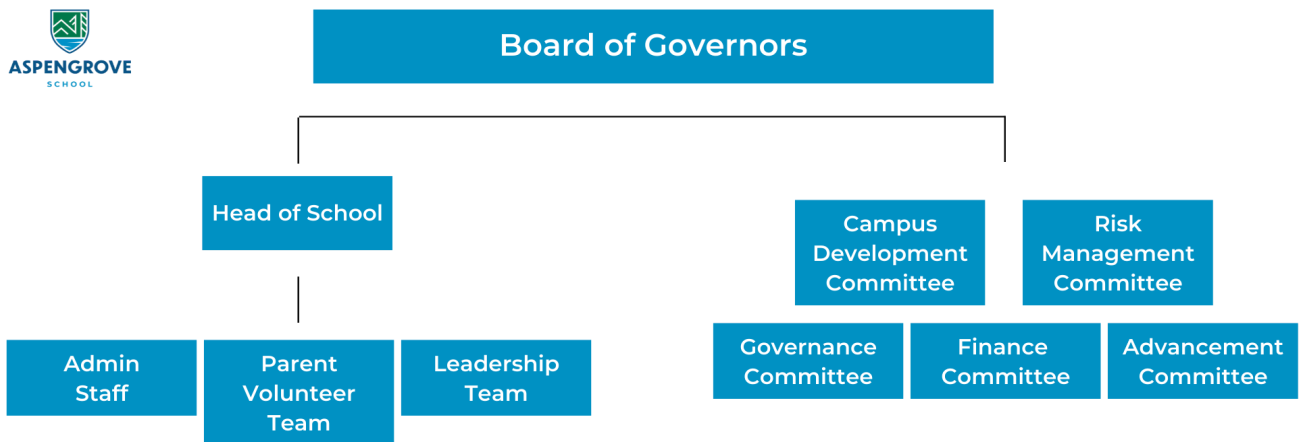
Aspengrove Parents' Association

Monika Lombardi - Chair

ORGANIZATION

The following diagram outlines the governance model at Aspengrove. This model ensures that each member of the school community has an opportunity to contribute to the growth of the school and to be well-informed on the pertinent issues. Additional committees may be added as required.

****Any parent interested in getting involved is encouraged to contact the Board Chair or Head of School.***



BOARD OF GOVERNORS

Iain McIver

Board Chair

Campus Development Committee Chair

Daniel Martinez

Board Vice-Chair

Advancement Committee Chair

Matthew Williams

Governance Committee Chair

Mike Harris

Finance Committee Chair

Clare Carson

Risk Committee Chair

Tony Ciammaichella

Board Member

Gary Kern

Head of School, Ex-Officio

Questions or concerns regarding day-to-day school operations should be addressed to the **Head of School, Gary Kern**, at gkern@aspengroveschool.com.

Questions or concerns for the Board of Governors or the Committees that report to the Board should be addressed to the Board Secretary.

SCHOOL ADMINISTRATIVE STRUCTURE

Head of School	Gary Kern
Principal of Junior School	Susan Riordan
Principal of Middle & Senior School	Rob Ohly
Chief Financial and Operating Officer	Catalin Albu
Director of Enrollment Management	Nicole Carpenter
Director of Student Engagement	Andrea Wyness
Head of Global Leadership	J.O. Eriksson
Director of External Programs	Alison Strobl

COMMUNICATION

There are three primary methods of communication from the school to parents; weekly e-news, teacher emails, and school website/calendar. Where issues of a more personal nature arise, the individuals concerned will be contacted directly via email or phone. Aspengrove strives to ensure all communication is timely and informative and fosters inclusion for all families. Please ensure you have your current email and contact information shared with the school (who can they email?) and you check your email regularly.

There are a number of information evenings scheduled for the upcoming year. Parents are strongly encouraged to attend the evenings to learn about important information as well as contribute to our community at large. These informational events include:

- Meet the Teacher - September 10
- Parent Teacher Conferences

- Hannah Beach Parent Education

* additional meetings may be scheduled as required throughout the year.

Parents are encouraged to communicate to teachers and staff directly. Teachers can be reached via email or through the schools main phone number. Teachers will respond to emails as promptly as possible but due to the nature of teaching may take up to 48 hours. For more urgent communication to teachers, please contact the main office. .

All members of our community are encouraged to check and read electronic messages regularly as they represent our main method of communication.

The School's Website provides access to Aspengrove's programs and policies. The purpose of our website is twofold:

- To inform **prospective families** about life at Aspengrove and to encourage them to find out more about us
- To act as a conduit for **current families** to find out about any and all aspects of school life as it pertains to them

*Important current information is posted directly onto our home page. Current families are expected to become familiar with the **Resources Section** of the website, where all information pertaining to our operations and calendar are posted.*

- **Aspengrove Handbook** (*Available on Website*)

The purpose of the Aspengrove School handbook is to provide families with guidelines for how the school operates. All families are expected to be familiar with its contents.

- **E-Newsletters** (*Weekly*)

The e-newsletter is sent out once a week to advise and/or remind families of upcoming events, communicate important information, highlight learning across the grades, and to celebrate achievements. [Sign up here.](#)

- **School Calendar**

There are several ways to access the school calendar. It is readily available on the school website in various forms. Additions and/or changes may be made throughout the year, but families will be informed. [The most current version](#)

[is always available on the website](#) and upcoming important dates are highlighted in the weekly eNews.

PARENT/STUDENT – TEACHER COMMUNICATION MODEL & PROTOCOL

In the event that a parent or student has specific classroom concerns, the following protocol should be followed:

Step 1: Speak to the appropriate teacher or program leader (in the case of extra-curriculars, sports teams, or co-curriculars) - most issues will be easily resolved at this level.

Step 2: If the issue is not resolved by speaking with the appropriate teacher, then a discussion with the appropriate division Principal will likely resolve the problem.

Step 3: If the issue is not resolved after speaking with the division Principal, a meeting should be arranged with the Head of School.

The school seeks to resolve issues in a fair and timely manner and that includes everyone directly involved.

ASPENGROVE SCHOOL UNIFORMS

Aspengrove Uniform is a key aspect of our school's sense of pride and belonging. Students are required to wear the uniform and expected to wear it with a sense of pride. Please see the Uniform Handbook for expectations. The Aspengrove School's [Uniform Handbook](#) outlines the uniform requirements..

FREE DRESS DAY

Once a month students will be granted a Free Dress day. During Free Dress days, jeans may be worn as long as they are clean and neat and not torn. T-shirts must have appropriate subject matter and be in good condition. No cutoffs, tank tops, spaghetti straps, or crop tops may be worn and midriff skin should not show. Hair and accessories must be in keeping with a workplace environment. Hats are not worn indoors.

OUT-OF-UNIFORM EVENTS

Occasionally, Aspengrove students will represent our school community while out of uniform. The same guidelines as appropriate for Free Dress days will apply (see above) unless otherwise stated given the specific event.

UNIFORM ORDERS

Our uniform suppliers are Cambridge Uniforms and O'Neills Sportswear. We also have a used uniform closet on campus.

Cambridge Uniforms

Current families may contact Cambridge Uniforms directly:

9:00AM to 5:30PM Monday to Saturday

Cambridge Uniforms

112-2455 Dollarton Hwy

North Vancouver, BC., V7H 0A2

Telephone: (604) 924-9069 or 1-800-924-9069

Email: orders@cambridgeuniforms.com

Cambridge will create a file for each student with their sizes after an initial purchase. If your child has outgrown items, please have their measurements ready to help with size selection. Outgrown items in good repair may be donated to the school's **Used Uniform Closet**, from which all proceeds go directly to the school.

O'Neills Sportswear

[Register for the Online Store](#)

[View Online Store](#)

**Please note O'Neills products will be available for purchase at set times each year in 2-week increments. These dates will be confirmed prior to the beginning of the school year.*

Some uniform pieces will be optional to purchase from a third-party distributor; for example:

- **Old Navy**
- **Children's Place**
- **The Gap**

DAILY OPERATIONS

SCHOOL OPERATING HOURS

The main school office is open from 8 AM to 4 PM Monday to Friday. Students may be dropped off as early as 7:45 AM. There will be supervision for Junior School students on the Junior School Playground. Middle and Senior School Students are welcome to arrive early and can meet in The Hive. (*Please refer to the [Early Learning Centre Handbook](#) for arrival and departure procedures and times for Junior Kindergarten students.)

Monday - Thursday:

All grades start at 8:30 AM

K-5 finish at 3:10 PM

6-7 finish at 3:15 PM

8-12 finish at 3:20 PM

Friday:

All grades start at 8:30 AM

K-5 finish at 12:35 PM

6-12 finish at 12:45 PM

Students in Grades 8-12 may participate in co-curricular activities from 3:30 - 4:45 PM.



ATTENDANCE

Attendance is the foundation of an excellent education, and at Aspengrove we expect students to attend all classes, excluding medical illness and extenuating circumstances. Further, the school receives financial support from the BC Ministry of Education provided students maintain a minimum attendance.

If a child will be late or absent from school, an email to attendance@aspengroveschool.com is required as early as possible.

Students are not permitted to leave the school grounds during the school day unless a) they are accompanied by an adult for special circumstances (e.g. doctor/dental appointment) or (b) students in Grade 12 are allowed to leave campus if they sign out at the front office and have permission from the Senior School Principal.

LATE ARRIVAL & ABSENCE

Late arriving students are required to check-in at the school office to have their attendance record updated by the main office. Parents/guardians will be notified if student absence is unaccounted for by 8:45 am.

FAMILY HOLIDAY/EXTENDED ABSENCE OUTSIDE SCHOOL HOLIDAYS

Aspengrove School's calendar provides for generous holidays with many days outside of the traditional school breaks. This has been done, in part, in order to provide families with the opportunity to take advantage of holidaying during the off-season. **We request that parents make every effort to schedule absences from school in conjunction with the school holidays.** Extended absences can adversely affect student learning at school.

In the event of a planned absence, parents must:

1. Contact the School's Principal, Aspengrove School's Front Office, and your child's teacher at least two weeks in advance of the absence

2. Ensure study material (if any) is acquired prior to student's absence. Work may be provided if absence is extended
3. Parents must send an email to attendance@aspengroveschool.com to ensure their child's attendance record is updated accordingly

The division Principal will meet with the student and with teachers to ensure communication and expectations are clear.

TRAFFIC & PARKING

This year, Aspengrove has introduced new updates to the parking lot and traffic flow to support safety and ease congestion. The campus has two entrances along Clark Drive. The first entrance is designated as a quick drop-off and pick-up roundabout only. To help ease traffic on Clark Drive, all cars using this entrance must follow the quick drop-off/pick-up routine by pulling off the centre line, either to the left or right, in a longitudinal stop, parallel with the traffic before continuing through the roundabout. Please note that parking is no longer permitted in the upper or lower lots located in front of the Main School Building or the Early Learning Centre.



[For new to Aspengrove Families, please watch this short video of our drop-off/ pick-up parking lot.](#)

For families or visitors who wish to park and stay longer on campus, or accompany their child into the Early Learning Centre, please **use the second entrance further along Clark Drive**.

This entrance leads past the Ravens Nest Athletics Centre, where you may park in the designated visitor lot located beside the small field.

[For new to Aspengrove Families, please watch this short video of our visitor parking lot.](#)



Please note there is **no longer vehicle access across campus between the Main School Building and the Ravens Nest**. Instead, a dedicated pedestrian crosswalk with road barriers has been added to ensure student safety.

We sincerely appreciate your patience and understanding as our school community becomes familiar with the updated traffic flow and parking procedures.

Speed Limits:

Clark Drive: **30 km/h**

Aspengrove School Grounds: **10 km/h**

****Please DO NOT park on the campus roadways or in prohibited spaces on Clark Drive****

STUDENT DRIVERS

All students who drive to school, or are driven to school by a student driver, need to submit a completed parental permission form to the school office before the driving occurs. [Please find the form here.](#)

Permission to be a passenger in an Aspengrove School student's car must be sanctioned by a parent. Student drivers are required to park in designated areas.

LOCKER USAGE

Lockers are provided for student use. Students may decorate the interior of their lockers in a tasteful manner but must not place anything permanently within the locker (e.g. stickers). Locker exteriors should not be decorated in any way. Periodic cleaning and inspections will occur. All lockers are expected to be closed in a secure fashion so that content does not spill out into the hallway. Students are asked to use a carabiner.

Students in Grade 8 and up will be given the privilege of being able to lock their lockers. This in no way, however, constitutes an expectation of privacy other than from other students. High school lockers will continue to be subject to regular inspections for hygiene and appropriateness of interior decoration, etc. Locker combinations will be recorded in the office. Students who use key locks must provide a second key to the office.

All students must keep their lockers closed with either a carabiner or a combination lock.

SCHOOL SUPPLIES

Consumable school supplies are provided by the school for students up to and including Grade 5. For students in Grades 6 - 10, supply lists are provided to families by classroom teachers at the beginning of the year and students are expected to come to school prepared with the suggested items.

The supply lists can be viewed below:

- [Kindergarten - Grade 5](#)
- [Grade 6 - Grade 10](#)

TEXTBOOK / NOVEL ALLOCATION

Non-consumable supplies that are provided by the school, are loaned to the student and are expected to be returned in reasonable condition.

Textbooks are signed out through the library and the subject teacher will also keep a record of book allocations. Students are expected to hand back the same textbook/novel at the end of the unit/course. Usual wear and tear are to be expected, but should a textbook be severely damaged or lost, the student will be charged the replacement cost.

TELEPHONE PRIVILEGES

The office telephone can be used by students, with the permission of a member of staff, for contacting parents or guardians, under certain circumstances:

- In the event of illness
- If the dismissal time is changed by the school

STUDENT CELL PHONES - “AWAY FOR THE DAY”

Cell phones are not required at Aspengrove and our “away for the day” policy expects cell phones to be left in student lockers and should not be in their pocket or backpack. Research is clear that having phones easily accessible contributes to distraction and social anxiety and by ensuring all students' phones are away for the day, it creates a more positive, focused environment for learning and interacting. At no time should students be engaged in texting, gaming, or telephone conversations during class time. The [Acceptable Use of Technology](#) applies to all Aspengrove students and students are expected to be respectful and responsible with the use of technology at all times, including outside of school hours. Please read this policy carefully to ensure understanding.

Students are responsible for the safekeeping of all their belongings. The school cannot be held responsible for the loss of personal property.



LAPTOPS AND OTHER ELECTRONIC DEVICES

Students in Grades 6-12 are expected to bring a computing device to be used to support classroom learning activities. This laptop should not be used for gaming, texting or videos during the school day. The Acceptable Use of Technology applies to the use of all computing devices.

OUT OF SCHOOL CARE (OSC) PROGRAM: KINDERGARTEN TO GRADE 5

Aspengrove School is committed to an Out of School Care Program that is developmentally appropriate and engaging for each child. This will include a variety of opportunities and exciting experiences, in a safe, healthy environment. The programme offers time for an after-school snack (lunch and snack on Fridays), outdoor activity, arts and crafts, baking, dramatic play, reading, and free play. Children may work on their homework independently during this time as well.

The program will begin at 3:15 PM M/T/W/Th and on Friday the program will begin at 12:35 PM and ends at 5 PM daily. Please be sure to send your child with extra food when they attend the Out of School Care program as **we do not provide meals.**

The OSC program will follow the regular school schedule as set out and distributed in September of each year and will therefore be closed for recognized statutory holidays, Parent-Teacher Conference days, and Early Dismissal days. We will provide care for scheduled professional development days*, school holidays* and during summer vacation*. You will need to register for these days in advance and there will be an extra fee. These spaces will be filled as they are received.

** Please refer to the school calendar for all closures.*

Please note the hours for our full-day OSC program on Professional Development Days and school closures runs from 8:15 AM - 4:15 PM daily.

Daily Rates Out of School Care

Kindergarten to Grade 5

After School Care	3:15 PM - 5:00 PM	\$23.00
School Closures	8:15 AM - 4:15 PM	\$55.00

Late pick-up fee

If you have not picked up your child by their program end time, you will be charged a late pick up fee. There will be a \$1.00 fee charged for every minute you are late. For example, if your child's program ends at 5pm and you arrive at 5:04pm, you are 4 minutes late and will be charged \$4.00. The late pick up person will be asked to sign a late pick up slip that will then be invoiced to your account.

When you enroll your child in our child care programs, for budgeting and scheduling purposes you are required to commit to your assigned space for the school year. If your child will be leaving the program we require three months' notice. There will be no refund for sick days, family holidays, or school closures due to snow or emergencies.

During the school year, children registered in our Out of School Care Program may be involved in school clubs or activities. If your child is registered for the OSC program on a day(s) that your child is attending a school club or activity, we require that the parent contact the OSC educators or ELC Director prior to the event via email to give permission. If a student is involved in a school related club or activity, the School will provide supervision and assist the student in checking into the Out of School Care Program. If a student is involved in a non-school related activity, the School will not be responsible for arranging or providing any other form of supervised transportation to and from the extra-curricular activity. To ensure the safety of our children, a child in our care will not be released to attend a school related club or activity unless the guardian has given permission in advance.

If you would like to have your child attend OSC please contact **Alison Strobl** via email at astrobl@aspengroveschool.com or **250.933.2223**.

ACADEMIC PROGRAM

Aspengrove School strives to challenge students inside and outside of the classroom, challenging students to become the very best version of themselves. The Academic Program offers an enriched academic program which is both B.C. Ministry of Education and International Baccalaureate accredited. Students in the Junior School complete the Primary Years Programme (IB), while students in Grades 6 through 10 complete the Middle Years

Programme (IB). For the 2025-26 School year graduating students will complete the B.C. Dogwood Diploma (B.C. Ministry of Education) and either an International Baccalaureate Diploma or IB Diploma Certificate (further details on the Diploma Programme below).

The following descriptions have been taken from the [International Baccalaureate Organization \(IBO\) Website](#).

JUNIOR KINDERGARTEN TO GRADE 5 (Primary Years Programme)

PYP Coordinator: Susan Riordan

The PYP curriculum framework provides a transdisciplinary programme of international education which is designed to foster the development of the whole child (academic, social, physical, emotional, and cultural needs).

Through the transdisciplinary themes, the PYP develops an understanding of the commonality of human experience. International-mindedness is further enhanced through the development of the Learner Profile which is essential elements of the programme.



The PYP promotes the construction of knowledge through inquiry within a concept-driven programme. It emphasizes meaning and understanding within all areas of the curriculum—the Learner, Learning & Teaching, and The Learning Community.

The PYP requires valid and varied assessment. The primary objective of assessing students' learning and performance is to give feedback to:

- **Students**
 - To encourage life-long learning
- **Teachers**
 - To support their reflections on what to teach and how to teach it
- **Parents**
 - To highlight their child's learning and development

For further information, please contact our PYP Coordinator, Mrs. Susan Riordan, at sriordan@aspengroveschool.com.

MIDDLE YEARS PROGRAMME (MYP)

GRADE 6 TO GRADE 10

MYP Coordinator: Rob Ohly

Students in the MYP build competencies in the key academic subject areas in preparation for success in the graduation and DP programs. The program is designed to deliver a relevant, rigorous and diverse curriculum that develops all aspects of the IB Learner Profile.

The MYP Provides a Holistic Education

A holistic education exposes the adolescent to as many different subjects, skills and experiences as possible. They should have the opportunity to show their various strengths, gaining both a sense of personal achievement and also being rewarded for them.

The MYP Emphasizes Intercultural Awareness & Communication

In our community, it is essential that the curriculum reflects and is responsive to the different perspectives of all our students. It should also guide them in forming their own, truly international, outlook. This implies an emphasis on communication skills, both in languages and other subjects.

The MYP is Student-Centered

It is vital that students develop an awareness of their own learning processes and acquire skills to continue learning throughout life. The curriculum shifts the emphasis from teacher instruction to student learning wherever possible.

GRADUATION PROGRAM

GRADE 12

DP Coordinator: Robert Ohly

The Diploma Programme prepares students for effective participation in a rapidly evolving and increasingly global society as they:

- Develop physically, intellectually, emotionally, and ethically
- Acquire breadth and depth of knowledge and understanding, studying courses from six subject groups
- Develop the skills and a positive attitude toward learning that will prepare them for higher education
- Study two languages and increase understanding culture, including their own
- Make connections across traditional academic disciplines and explore the nature of knowledge through the programme's unique Theory of Knowledge (TOK) Course
- Undertake in-depth research into an area of interest through the lens of one or more academic disciplines in the Extended Essay (EE)
- Enhance their personal and interpersonal development through Creativity, Action and Service (CAS)

Diploma Programme Curriculum Framework

IB Diploma Programme students must choose one subject from each of five groups (1 to 5), ensuring breadth of knowledge and understanding in their best language, additional language(s), the social sciences, the experimental sciences and mathematics. Students may choose either an arts subject from group 6 or a second subject from groups 1 to 5.

At least three and not more than four subjects are taken at a higher level (HL - 240 teaching hours), while the other subjects are taken at standard level (SL - 150 teaching hours).

In additionon to disciplinary and interdisciplinary study, the Diploma Programme features three core elements that broaden students' educational experience and challenge them to apply their knowledge and skills: Theory of Knowledge, the Extended Essay and Creativity, Action and Service.

IB Diploma Certificates

It is acknowledged that not all Grade 12 students will choose to complete a full Diploma Programme. All students will complete a B.C. Dogwood Diploma and, in addition, may opt to complete some Diploma courses, as applicable. For any DP courses successfully completed, students will be awarded a certificate through the IB organization that will be applied to university entrance.

All Grade 11 and 12 students will be offered continuous academic counseling as they progress through the programme.

For further information, please contact our DP Coordinator, Mr. Robert Ohly, at rohly@aspengroveschool.com.

Advanced Placement Program

The Advanced Placement (AP) program offers high school students the opportunity to take college-level courses and exams. AP courses challenge students with rigorous content that encourages critical thinking, problem-solving, and in-depth learning. Successfully completing AP courses can help students earn university credits, strengthen college applications, and prepare for post-secondary studies. AP is recommended for motivated, academically prepared students who are eager to engage with more complex material.

External Credits Policy

In order to ensure all students at Aspengrove School have the correct number of credits to graduate with BC Dogwood High School Certificate, the following policy was created to guarantee credits are received for any applicable external activities Aspengrove School students participate in.

[View the Aspengrove School External Credits Policy here.](#)

THE IB LEARNER PROFILE

Aspengrove School is dedicated to exemplifying the IB Learner Profile which aims to develop internationally-minded people who, recognizing their common humanity and shared guardianship of the planet, help to create a better and more peaceful world. Aspengrove students, teachers, parents, and staff strive to be:

Inquirers

We nurture our curiosity, developing skills for inquiry and research. We know how to learn independently and with others. We learn with enthusiasm and sustain our love of learning throughout life.

Knowledgeable

We develop and use conceptual understanding, exploring knowledge across a range of disciplines. We engage with issues and ideas that have local and global significance.

Thinkers

We use critical and creative thinking skills to analyze and take responsible action on complex problems. We exercise initiative in making reasoned, ethical decisions.

Communicators

We express ourselves confidently and creatively in more than one language and in many ways. We collaborate effectively, listening carefully to the perspectives of other individuals and groups.

Principled

We act with integrity and honesty, with a strong sense of fairness and justice, and with respect for the dignity and rights of people everywhere. We take responsibility for our actions and their consequences.

Open-Minded

We critically appreciate our own cultures and personal histories, as well as the values and traditions of others. We seek to evaluate a range of points of view, and we are willing to grow from the experience.



Caring

We show empathy, compassion, and respect. We have a commitment to service, and we act to make a positive difference in the lives of others and in the world around us.

Risk-Takers

We approach uncertainty with forethought and determination; we work independently and cooperatively to explore new ideas and innovative strategies. We are resourceful and resilient in the face of challenges and change.

Balanced

We understand the importance of balancing different aspects of our lives - intellectual, physical, and emotional - to achieve well-being for ourselves and others. We recognize our interdependence with other people and with the world in which we live.

Reflective

We thoughtfully consider the world and our own ideas and experience. We work to understand our strengths and weaknesses in order to support our learning and personal development.

[Source: International Baccalaureate Organization](#)



ACADEMIC EXPECTATIONS

Aspengrove students strive to do their best and to exhibit the characteristics of an IB learner (above). Individual potential and achievement are at the center of our program and we aim to challenge students to engage fully in all that is offered at the school, offering support and assistance as is necessary to help them achieve success. As students move up in grades, they will take on an ever-increasing level of responsibility for their own performance.

Some examples of these responsibilities are:

- Attend school regularly
 - ***More than five absences in a term is a cause for concern***
- Arrive at school no later than **8:15 AM** in order to be in class and ready to begin on time
- Be prepared for class
- Fully participate in classroom activities and discussions
- Complete homework assignments
 - Students are expected to have access to a computer and the internet at home
- Respect assignment due dates
- Ask for assistance when needed
- Study for tests and exams
- Always work to potential; strive to excel

Should a student demonstrate difficulty in maintaining a satisfactory level of attainment in any area, a parent meeting will be called by the relevant faculty member and/or the school Principal. It is an expectation that the school, student and parent(s)/guardian(s) work together to ensure student success. If it becomes apparent that the student is unable to work within this framework, an alternative educational setting may be advised.



STUDENT RESOURCE CENTRE

Aspengrove School is an inclusive environment and recognizes that students come with varied needs. The Student Resource Centre (SRC) is a space in the main building with a team of Learning Resource Teachers and Educational Assistants who support students with identified challenges (learning and other) and work with teachers to support various learners in their classroom. Students who work with the SRC team will receive a wide range of support based on their needs. If your child does not currently receive official SRC support and you have concerns about their learning or development, the first step is to speak to the classroom or subject teacher.

TECHNOLOGY IN THE LEARNING ENVIRONMENT

It is our belief that technology is best positioned as a tool that students use to enhance their learning across disciplines in order to support innovation in teaching and learning. At Aspengrove School, we also encourage balance when it comes to technology use in order to support healthy bodies and healthy minds. The student device program across the K-12 continuum and an overview of our [BYOD \(Bring Your Own Device\)](#) for Grades 6-12 program can be accessed on our website.



HOMEWORK

Junior School Homework Policy

In PYP, homework can be part of some students' learning journey. Homework may be used when the nature of the work precludes completion at school (interview a family member, gather artifacts showing your family culture, etc), or when a student requires extra practice with a particular skill. In this case, the classroom teacher and family will work together to design a homework program that is manageable and benefits the individual students' learning.

Reading at home is a daily expectation of an Aspengrove student to encourage a life-long habit. Recognizing the varying levels of literacy development, we recommend that parents read to students, or they may listen to an audio book, read by themselves or read with a family member.

Middle School Homework Policy

At Aspengrove School, we give meaningful homework that is developmentally appropriate. Beginning in Grade 6, it should be expected that there is home learning occurring on a regular basis. We highly recommend that you set aside a time daily for quiet, uninterrupted study. Students should be discouraged from multitasking while studying, and avoid unnecessary technology and media. On days that homework is not assigned, reviewing, reading, and previewing learning is recommended.

Homeroom and subject teachers will discuss specific homework guidelines with students at the beginning of the year. If you have questions about homework, please contact the individual subject teacher.

Senior School Homework Policy

Homework that is thoughtful, relevant and engaging can be a necessary adjunct to classroom teaching, and consequently all Senior School students can expect to receive homework on a regular basis. Homework is intended to reinforce work covered in class and to help students develop important habits of self-discipline, organization and self-reliance.

As per our Assessment Policy, here are our guidelines on the amount of homework students can expect to receive:

- Grade 6 students - up to 30 minutes per subject per week;

- Grade 7 students - up to 40 minutes per subject per week;
- Grade 8 students - up to 50 minutes per subject per week;
- Grades 9 and 10 - up to 1 hour per subject per week;
- Grades 11 and 12 - can expect approximately 1-3 hours of homework per subject per week.

STUDENT REPORTS

Student interim and formal reports are provided throughout the year. Parent/Teacher Conferences are also scheduled throughout the year. Specific dates concerning the reports and interviews are published on the school calendar. Depending on the nature of the conference, typically parents and students are expected to attend as this fosters healthy communication between home and school and contributes to the student's academic success.

ASPENGROVE SCHOOL COURSE CHALLENGE

Course challenge refers to the process of earning 'credit' for a provincially or locally developed grade 11 or 12 course through an assessment of a student's prior learning without actually taking the course. ***This does not apply to IB Diploma courses.***

We recognize that some students are able to demonstrate a high level of achievement of the learning objectives of a particular course without spending the required hours enrolled in the course. Our intention is to allow students to challenge a course and to demonstrate the course requirements through a comprehensive challenge process, in order to move on to further learning. Students will be required to demonstrate that they meet the required outcomes as detailed by the Ministry guidelines. Credits earned go towards the completion of the Dogwood Diploma only.

Process

1. To challenge a course, a student must be enrolled in the school

2. A student who wishes to challenge a course needs to make a request to the Diploma Programme (DP) Coordinator by the beginning of the school year in which they wish to obtain credit
3. The student will be required to provide a written statement as to why they wish to challenge the course and include details of relevant learning that has already occurred
4. Following this initial request, the Diploma Programme (DP) Coordinator will suggest one of the following plans:
 - a. If the subject is available within the school, the Diploma Programme (DP) Coordinator will approach the subject teacher who will provide suitable assessment materials to determine if the student has met the required course outcomes; **or**
 - b. If the subject is unavailable within the school, the Diploma Programme (DP) Coordinator will contact another school where the subject is offered and make arrangements for the necessary assessment to occur. There may be costs incurred. It is expected that any costs incurred will be the responsibility of the student's family
5. The course challenge process should include a variety of assessment techniques that measure the level of student attainment of course objectives
6. It is expected that the student will demonstrate a mastery of the course content by obtaining 80% on completion of the selected tasks
7. A student who is not successful in the course challenge process shall not be allowed to challenge the same course a second time. In order to receive credit for the course, the student will be required to register and successfully complete that course

FINE ART & ATHLETICS

All students, throughout their years at Aspengrove, are expected to be involved in both an Athletic and Fine Arts programme. Success in Fine Arts and Athletics is dependent upon participation and a positive attitude. As with the academic subjects, it is expected that students come to their Athletic and Fine Arts activities prepared to participate and to learn. Students must come to sports practices and P.E. classes with complete gym uniforms (see uniform section). Students must come to band classes with instruments, sheet music, and a pencil.

The RAVENS Outdoor Education Program

Risk Taking

Action Leadership

Values Exploration

Engaged Learning

ENVIRONMENTAL Stewardship

Self-Confidence

Outdoor Education is an integral part of an Aspengrove School's education. It is embedded into the overall program and allows students and teachers to learn together while building on community. Our program is part of our curriculum and is designed as a progression from introduction to independence.

The aim of the Aspengrove School Outdoor Education program is to provide students with a safe, balanced, and respectful environment beyond the classroom in which to learn about themselves, others, and the world around them.

SELF - Physical/emotional/social competence, confidence in the outdoors/unfamiliar contexts

OTHERS - Collaborative team building, empathy, problem-solving, shared understanding, cooperation

ENVIRONMENT - Appreciate and respect for geographic/ environmental contexts



The Outdoor Education Program provides students in Grades 4-10 with the tools and knowledge to adapt to the outdoors by exposing them to a variety of outdoors experiences in a progressive program curriculum. Each level introduces participants to an increasing level of skills development and challenge. Features of the Outdoor Education Program also support students who are participating in the Duke of Ed. Program.

[For more information on the RAVENS program please click here.](#)

CLUBS AND ACTIVITIES (GRADES K-5)

All students in Kindergarten - Grade 12 have the opportunity to participate in the co-curricular activities as part of their educational development. The program provides opportunities for our students to experience clubs and activities throughout the year that will occur before school, at lunch and after school. They will be encouraged to choose activities that suit their interests and their schedules to ensure they can participate fully in all aspects of the offering. Students can choose from in the areas of athletics, the arts, social action and student leadership.

SPORTS AND CLUBS (GRADES 6 AND 7)

In Grade 6 and 7 students will experience a broad range of individual and team sports as well as opportunities to engage in various clubs and arts. All students will practice in the three competitive sports; soccer, volleyball and basketball and students will be encouraged to play in various games and tournaments. Students will also participate in run-throw-catch Track and Field practices and competitions in the spring. During lunch students will also be encouraged to participate in various clubs including arts, technology and games.

CO-CURRICULAR PROGRAM (GRADES 8-12)

Grade 8 - 10 students will participate in at least one co-curricular activity which occurs after school two days per week from 3:30 - 4:45 PM. The co-curricular activities are being developed to support competitive sports, academic clubs, and artistic endeavors and requires students to commit to an area of focus for one term. Students of course can participate in more than one co-curricular and are encouraged to engage fully in developing the skills and interest for their co-curricular program. Students in Grades 11 and 12 are highly recommended

to participate in at least one co-curricular during the year. Sign up for co-curricular programming will occur at the start of the school year.

HOUSE SYSTEM

Students and staff members are each assigned to one of the three 'Houses' at Aspengrove. The three houses, Arbutus, Cedar and Oak, include students from all grades. Older students are given the leadership role of House Captain. When a new member joins the Aspengrove community, they are assigned a House.

The purpose of the House system is to promote school spirit and to allow students to engage in friendly competition. Throughout the school year there are occasions for students to earn House Points by demonstrating good citizenship and participating in various activities.

AWARDS AND RECOGNITION

Student recognition is an important part of student achievement and development and Aspengrove strives to recognize students in a variety of ways, both informally and formally. During the year students may be recognized quietly for accomplishments inside and outside of the classroom, and they may be recognized formally during assembly time. At the end of the year, students will be recognized for outstanding achievement at year end assemblies.

Honor Roll

In the Senior School we recognize students in Grades 8 to 12 who have worked hard over the course of an academic term and have achieved an **excellent** academic standing. This provides an achievable benchmark that all students can work towards and use as a measure of their progress.

Subject Awards

These awards are given to students who have shown a deep **passion** for a particular subject combined with **excellent** academic achievement. Their genuine curiosity and outstanding engagement have not only enhanced their own learning journeys but have also inspired those around them, contributing to a richer and more vibrant classroom environment.

The culmination of awards occurs for our graduating class:

Governor General Academic Bronze Medal

Awarded through the Chancellery of Honors Office

“Awarded for academic excellence to the student who achieves the highest average upon graduating from a secondary school. The average includes all **grade 11 and grade 12 courses** as listed on the student's official Transcript of Grades issued by the Ministry of Education. The average cannot be anticipated; it must be calculated based on **final results** after provincial/territorial examinations, where the Ministry of Education requires final exams.”

Cathy Grunlund Award

This award, named in honour of Aspengrove School's first Head of School, is given to the graduating student who has demonstrated the greatest personal and academic growth during their years at the School.

Award for Leadership

This award was created to honour Dr. Anthony Ciammaichella, first Board Chair and outstanding leader of the Central Island Independent School Society and is presented to the graduating student who exemplifies the attributes of the Learner Profile and has demonstrated leadership skills within the school environment.

Lifer Awards

Awarded to each Grade 12 student who has attended Aspengrove since Kindergarten.

Aspengrove Shield

Awarded to the graduate that best represents the spirit of Aspengrove School through personal attitude and achievement and through assistance and service to others.

ALLERGIES OR OTHER MEDICAL CONDITIONS

Should your child have an allergy or medical condition that requires special medication or intervention, the school requires a copy of the doctor's report with recommendations to be kept in the student's permanent student record file.

FOOD POLICY

Exposure to certain foods, including peanuts and nut products, can have very serious, and sometimes, fatal consequences for those who have allergies. At Aspengrove, we promote a safe environment for all members of the community. Therefore we ask all families to be vigilant in monitoring the food items that they send to school. **No foods with peanuts, peanut butter, peanut oil, or any other nut products are to be sent to school at any time.**

Please note that whereas Aspengrove School is a nut-aware environment, it is important to keep in mind that it is impossible to guarantee we are nut-free. The school is highly "allergy conscious" and will make every attempt to maintain a safe and healthy learning environment for all students.



EMERGENCY PROCEDURES

SCHOOL CLOSURE

In the event of school closure (for example, as a result of snow) families will be informed by one or all of the following methods:

- **The emergency text messaging system will be initiated**
- **A message will be posted to the school's social media channels confirming the closure**

This procedure will be followed each day of a school closure.

In the event of snow or a power outage leading to a school closure during school hours, students will only be dismissed if a parent or guardian has been contacted.

Because conditions can vary from area to area, please use your discretion and do not come to school if conditions in your area are dangerous.

IN THE EVENT OF A MAJOR DISASTER

To ensure the safety of students and staff at Aspengrove, in the event of a major disaster, we have an Emergency Preparedness Plan, and drills are practiced regularly.

In the event of such a situation:

- **DO NOT Telephone the School**
 - Lines must be open to call ambulance and fire trucks
- **DO NOT Immediately Drive to the School**
 - Our access routes must remain open for emergency vehicles and roads may not be safe
- **DO Tune your Radio to 99.9 FM or 102.3 FM**

Announcements will be broadcast as they are available

PERSONAL INFORMATION PRIVACY POLICY

THE SCHOOL'S COMMITMENT TO YOU

Safeguarding personal information of parents and students is a fundamental concern of Aspengrove School. The school is committed to meeting the privacy standards established by British Columbia's Personal Information Protection Act (PIPA) and any other applicable legislation.

This Personal Information Privacy Policy describes the policies and practices of Aspengrove School regarding the collection, use and disclosure of personal information about students and parents, including the steps the school has taken to ensure personal and financial information is handled appropriately and securely.

Aspengrove School collects and uses personal information to provide students with the best possible educational services as articulated by the Mission Statement of the school. Most of the information the school collects comes to the school directly from parents and students or is information regarding the student's school activities, performance or behaviour, such as attendance records or grades. For example, when a student applies to register in the school, the school will ask you to provide the information that enables us to complete the registration process. This also includes information on academic, health, and personal matters needed by the school to provide the best possible education and co-curricular programs. Aspengrove School also collects information in connection with the use of its computer systems. Aspengrove School is responsible for maintaining and protecting the personal information under its control.



MEDICATIONS AT SCHOOL

Any student who needs to take medication at school is to follow this procedure:

1. Medication, prescription and over the counter, is to be brought to the office with administration instructions written out and signed by the parent. **No staff member is permitted to administer any medication** (including over-the-counter) **without a signed request with administration instructions from the child's parent/guardian**
 - a. In the **Early Learning Centre**, medication is given to the classroom teacher after the child's parent and/or guardian has completed a Medication Administration Form. All medication administered must be in its original form. If medication is a prescription, the prescription needs to be in its original packaging with clear labeling displaying the child's name and proper dosage amount.
2. If a parent is confident that their child, aged 12 and above, is able to self-medicate, then a note to the office informing staff of this arrangement is required. In this case, medication, prescription and over-the-counter, must be kept at the school office
3. **No medication (even Tylenol, Advil etc.) is to be provided to any student without the written permission of the child's parent.** Students are not to provide medication, prescription or over-the-counter, to anyone. A student who is not feeling well should come to the office for assistance. The office will phone home if medication is required

This policy is for the safety of all of our students.

CODE OF CONDUCT & SCHOOL POLICIES

CODE OF CONDUCT

The Aspengrove School community believes it is important to establish a welcoming environment where everyone belongs. We do this by:

- Caring for ourselves
- Caring for others
- Caring for the world

Our Code of Conduct is designed to reflect our school values and to align with the attributes of the IB Learner Profile. We use the code to teach and encourage positive behaviours.

[View the Aspengrove School Code of Conduct here.](#)

SOCIAL CONFLICT PREVENTION & INTERVENTION POLICY

Aspengrove School believes that all students should feel safe at school and deserve a positive school climate that is inclusive and accepting, regardless of race, ancestry, place of origin, colour, ethnic origin, citizenship, creed, sex, sexual orientation, gender identity, gender expression, age, marital status, family status or disability. The School also believes that a healthy, safe and inclusive learning environment where all students feel accepted is a necessary condition for student success. The School understands that students cannot be expected to reach their full potential in an environment where they feel insecure or intimidated.

[View the Aspengrove School Social Conflict Prevention and Intervention Policy here.](#)



PROGRESSIVE DISCIPLINE POLICY

The goal of Aspengrove School's Progressive Discipline Policy is to support a safe, inclusive, and accepting learning and teaching environment in which every student can reach their full potential. Progressive discipline is an approach that makes use of a continuum of prevention programs, interventions, supports, and consequences, building upon strategies that build skills for healthy relationships and promote positive behaviours.

[View the Aspengrove School Progressive Discipline Policy here.](#)

CANNABIS & ALCOHOL POLICY

All members of the School community are required to understand their responsibility under this policy to create a smoke-free and drug-free School community. Minimizing the health and safety risks associated with cannabis and alcohol use is the responsibility of all members of the School community. Anyone who breaches this policy will be subject to disciplinary measures as set out in the Code of Conduct.

[View the Aspengrove School Cannabis and Alcohol Policy here.](#)

WEAPONS & FIREARMS POLICY

Aspengrove School strictly prohibits and does not tolerate the possession of weapons or replicas thereof anywhere on its property, including its building, in student lockers, or at any premise at which school-sponsored events or activities may be held. The School condemns the use of weapons or replicas thereof, or the threat of the use of weapons or replicas thereof, by any person on its property, in its buildings, or at school-sponsored events or activities.

[View the Aspengrove School Weapons and Firearms Policy here.](#)



SMOKE FREE POLICY

Aspengrove School's administration is committed to the provision of a smoke-free environment. The School does not condone smoking or the use of tobacco products, including e-cigarettes, marijuana and medically prescribed marijuana, and vaporizers. The use of tobacco products of any kind, including e-cigarettes and vaporizers, is strictly prohibited on any part of the school's property, during off-site School-sponsored field trips, excursions or activities, or in any school building or school vehicle.

[View the Aspengrove School Smoke Free Policy here.](#)

HOMEWORK POLICY

The amount of homework given at Aspengrove School will vary throughout grades based on the developmental needs of the student. Aspengrove School strives to ensure the well-being of our students and teachers take this into account when assigning homework.

[View the Aspengrove School Homework Policy here.](#)

COMPLAINTS POLICY

It is Aspengrove School's intention to ensure procedural fairness and good judgment in our professional relations with children and families. We welcome the voicing of all concerns that may be brought forward in the spirit of mutual respect and in the best interest of the child(ren) concerned. We ensure that concerns are treated promptly, thoughtfully, and with dignity.

[View the Aspengrove School Complaints Policy here.](#)



ACADEMIC INTEGRITY POLICY

Academic integrity is a guiding principle at Aspengrove School and in education, as it is a choice to act in a responsible way whereby others can have trust in us as individuals. It is the foundation for ethical decision-making and behaviour in the production of legitimate, authentic and honest scholarly work.

[View the Aspengrove School Academic Integrity Policy here.](#)

ACCEPTABLE USE OF TECHNOLOGY

These policies aim to promote positive and effective Digital Citizenship among students, staff and guests at Aspengrove School. For the purposes of this agreement, we define Digital Citizenship as 'the norms of appropriate, responsible behavior with regard to technology use, and include in this definition: Digital Communication, Digital Literacy, Digital Etiquette, Digital Law, Digital Rights and Responsibilities, Digital Health and Digital Security.

This agreement pertains to student and staff use of the school technology infrastructure, all technology brought into the school, and any use of technology in ways that impact our school community. This includes, but is not limited to, wired and wireless computers and peripheral equipment (for example, cell phones, iPods and gaming devices), files and storage, email and Internet content (blogs, web sites, web mail, groups, wikis, etc.).

[View the Aspengrove School Acceptable Use of Technology \(Students\) Policy Here.](#)



SOCIAL MEDIA POLICY

The purpose of this document is to ensure that all students of Aspengrove School are using safe media practices as well as respecting the same policies and guidelines when publicly posting on media platforms including, but not limited to social media, websites, forums, etc.

[View the Aspengrove School Social Media Guidelines here.](#)

LAPTOP POLICY

Aspengrove School is dedicated to making advanced technology and increased access to learning opportunities available to all students. As a result of this pursuit, laptops are available for student use at the School. The use of technology to support curricular goals is central to the availability of the laptops.

[View the Aspengrove School Laptop Policy here.](#)



DEFINITIONS

Agreement

- This document entitled [Aspengrove School Acceptable Use of Technology \(Students\)](#).

Consent

- Written informed consent in advance by the parent or legal guardian of users under 19 years of age or by users themselves if 19 years of age or older.

Personal Information

- Information about an identifiable individual. Identifiable information may be from a single source or through a combination of multiple sources.
- Examples of personal information include, but are not limited to:
 - Name, address or telephone number
 - An individual's race, national or ethnic origin, colour, religious beliefs, political beliefs or associations
 - Age, gender, sexual orientation, marital status or family status
 - An identifying number, such as driver's license, social insurance number, or student ID number
 - Fingerprints, blood type, inheritable characteristics, health history, or medications
 - Physical or mental history, or disabilities
 - Education level, financial information, criminal history or employment history

Internet

- The public Internet

Network

- Any or all of Aspengrove School's local area network or the Internet

P2P

- Peer to Peer software that facilitates the sharing of large files. This software is often associated with sharing of copyrighted material such as music, movies, and software. Examples of this type of software include: Bittorrent, Limewire, Bearshare, Kazaa

Publish and Publication

- To release or make accessible to publics beyond those involved in the student's learning programme and the student's parent/guardian. Published information may include student's personal information and /or student work

School Staff

- Teachers, administration and support staff of Aspengrove School

Student Work

- Creations of the student's mind: inventions, literary and artistic works, and symbols, names, images, and designs

User

- Any teacher, student, board member, parent, volunteer or guest given authorized access to a network



RESOURCES

- [Aspengrove School Acceptable Use of Technology \(Students\) Policy](#)
- [Aspengrove School Cannabis and Alcohol Policy](#)
- [Aspengrove School Code of Conduct](#)
- [Aspengrove School Progressive Discipline Policy](#)
- [Aspengrove School Smoke Free Policy](#)
- [Aspengrove School Social Conflict, Prevention and Intervention Policy](#)
- [Aspengrove School Social Media Guidelines \(Students\)](#)
- [Aspengrove School Weapons and Firearms Policy](#)
- [Aspengrove School Student Laptop Policy](#)
- [Common Sense Media](#)
- [Academic Integrity Policy](#)
- [Assessment Policy](#)
- [Complaints Policy](#)
- [External Credits Policy](#)

For further information and ongoing updates, please refer to the school website.



ASPENGROVE
SCHOOL

7660 Clark Dr, Lantzville, BC. V0R 2H0
www.aspengroveschool.ca
(250) 390 2201